



## **Rabbit anti Ephrin B1 Polyclonal Antibody**

**Alternative Name(s): Ephrin-B1; EFNB1**

### **Order Information**

- **Description:** Ephrin B1
- **Catalogue:** 500-13624
- **Lot:** See label
- **Size:** 100ug/200ul
- **Host:** Rabbit
- **Clone:** nan
- **Application:** WB
- **Reactivity:** Hu

### **ANTIGEN PREPARATION**

Recombinant full length (1-346aa) human Ephrin-B1 protein expressed in E.coli.

### **BACKGROUND**

Ephrin-B1, also known as EFNB1, a member of the ephrin gene family, is important in brain development as well as in its maintenance. It favors dendritogenesis of granule neurons during cerebellum development. This protein is highly expressed in several forebrain subregions compared to other brain subregions, it may play a pivotal role in forebrain function. The EPH and EPH-related receptors comprise the largest subfamily of receptor protein-tyrosine kinases and have been implicated in mediating developmental events, particularly in the nervous system. The ephrin ligands and receptors have been divided into two major subclasses: Ephrin-A and ephrin-B.

### **PURIFICATION**

The Rabbit IgG is purified by Epitope Affinity Purification

### **FORMULATION**

This affinity purified antibody is supplied in sterile Phosphatebuffered saline (pH7.2) containing antibody stabilizer

### **SPECIFICITY**

This antibody reacts with human Ephrin-B1. The other species are not tested.

### **STORAGE**

The antibodies are stable for 24 months from date of receipt when stored at -20oC to -70oC. The antibodies can be stored at 2oC-8oC for three month without detectable loss of activity. Avoid repeated freezing-thawing cycles.

### **APPLICATIONS/SUGGESTED WORKING DILUTIONS\***

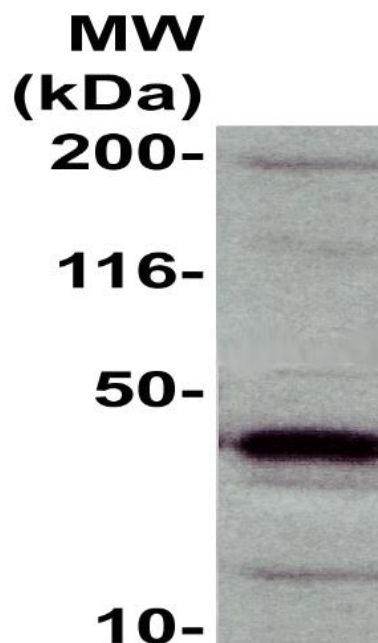
- Western Blot: 0.1-1 µg/ml
- ELISA: 0.01-0.1 µg/ml
- Immunoprecipitation: 2-5 µg/ml
- IHC: 2-10 µg/ml
- Flow cytometry: Not tested
- Molecular Weight: 58.0
- Positive Control: Kidney Tissue
- Cellular Location: Cell Membrane

\*Optimal dilutions should be determined by researchers for the specific applications.

### **FOR RESEARCH USE ONLY.**

AbboMax, Inc 2528 Qume Drive, Suite 8, San Jose, California 95131, USA  
1 408-573-1898 (Tel). 1 408-573-1858 (Fax). [www.abbomax.com](http://www.abbomax.com) [info@abbomax.com](mailto:info@abbomax.com)

#### DATA ATTACHMENTS



Western Blot: The full length recombinant protein was immunoblotted by the Rabbit anti Ephrin-B1 (Cat# 500-13624) @ 1:500. An immunoreactive band around 40 kDa was observed.

#### REFERENCES

#### FOR RESEARCH USE ONLY.

AbboMax, Inc 2528 Qume Drive, Suite 8, San Jose, California 95131, USA  
1 408-573-1898 (Tel). 1 408-573-1858 (Fax). [www.abbomax.com](http://www.abbomax.com) [info@abbomax.com](mailto:info@abbomax.com)